

COMPANY PRESENTATION

REALIZATION OF
MECHANICAL, ELECTRICAL
AND INSTRUMENTAL PLANTS



WHO WE ARE

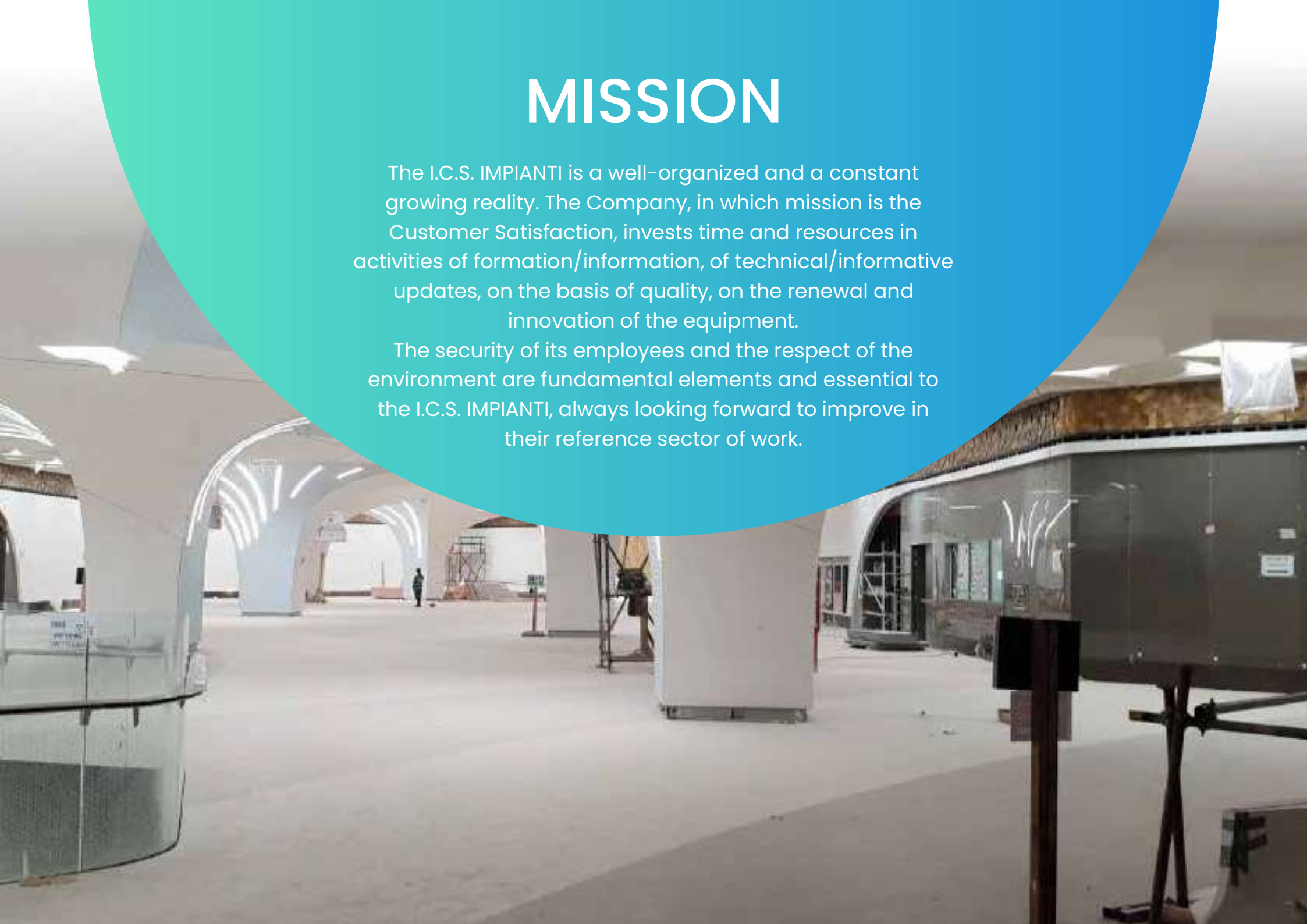
I.C.S. IMPIANTI S.R.L. was born from the Lambri family's multi-years of experience in the field of mechanical, electrical and instrumental systems. Its foundation is due to Salvatore Lambri (meant Enzo), who in the seventies embarked on a career in plant engineering, with mechanical processing on behalf of third parties to appear on the national and foreign scene with a capillary design network. There are many construction works, electrical and mechanical systems in steel mills, turbogas power plants and incinerators, the company has been able to manage over three hundred work units used in construction sites around the world. The company's expertise, the quality of services and activities in the aeronautical automation sectors at national and international level has generated constant growth and recognition of the company in the sector. Salvatore Lambri has been able to transmit passion and expertise to his son Daniele who took over the family business in 2015 and began the production activity effectively by introducing modernization in electrical and electro-instrumental systems and industrial mechanics. Know-how and experience in MEP services in both the civil and industrial fields have been supported starting from 2018 for specific interventions in the field of renewables. Equipped with ISO 9001, ISO 45001, ISO 14001, SA8000 and VCA certifications, the company aims at constant growth and acts as a reliable partner of reference for its customers by fully taking care of the construction of the plants involved from prototyping to production and delivery.



MISSION

The I.C.S. IMPIANTI is a well-organized and a constant growing reality. The Company, in which mission is the Customer Satisfaction, invests time and resources in activities of formation/information, of technical/informative updates, on the basis of quality, on the renewal and innovation of the equipment.

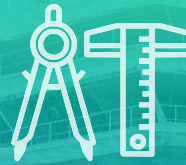
The security of its employees and the respect of the environment are fundamental elements and essential to the I.C.S. IMPIANTI, always looking forward to improve in their reference sector of work.



TARGETS



- Meet required requirements from clients necessary to comply with the services, including those applicable mandatory
- Improve the efficiency of the management system



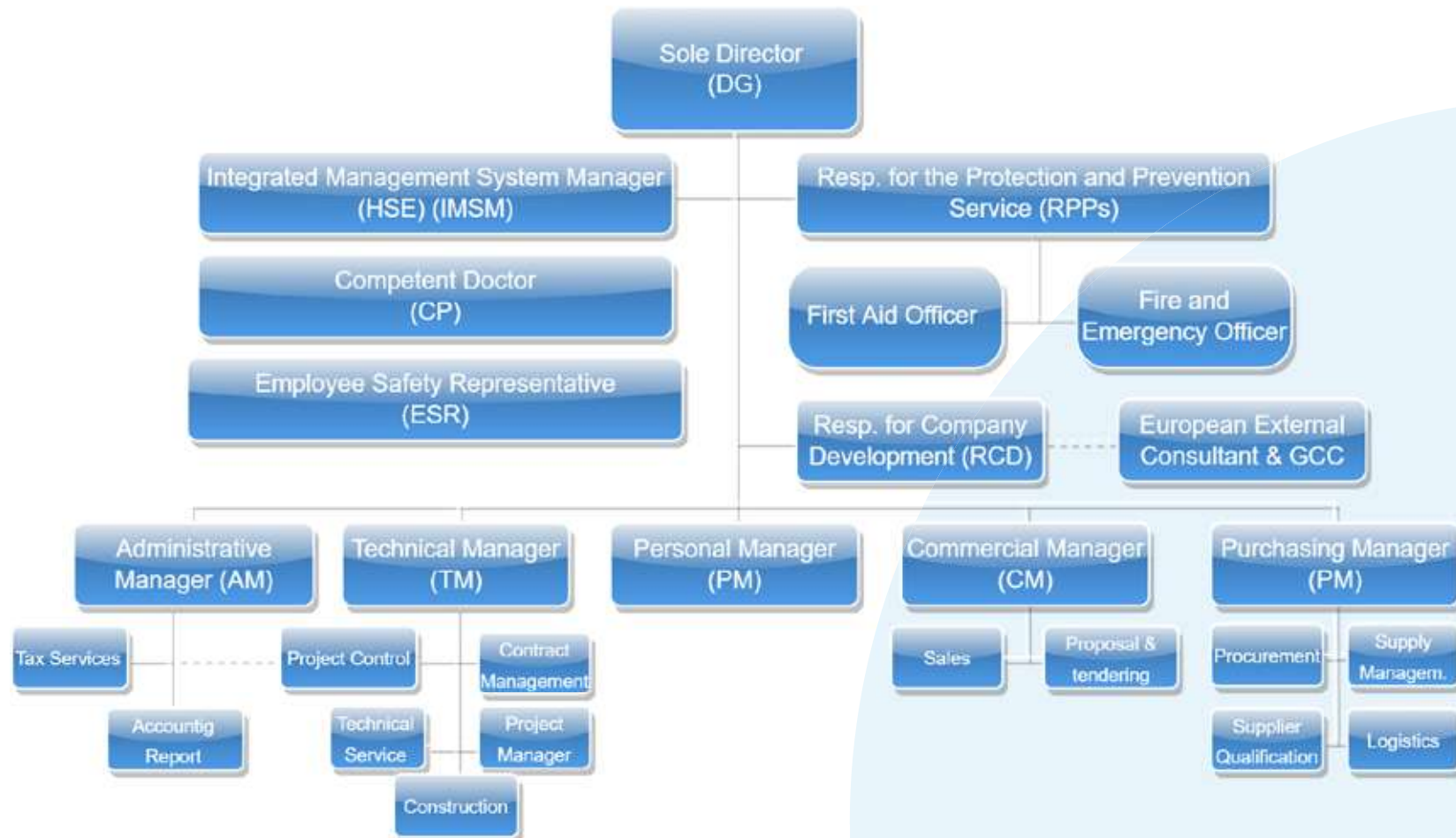
- Lower costs, in terms of eliminating the internal non conformities of those induced by external providers
- Empower Individually the resources, giving value to the work being done by the responsible and by the collaborators
- Continuously monitor the resource consume to finally minimize it



- To choose its own providers, so they assure the respect for ethical principles
- Guarantee the protection of rights, the health and security of the workers

ORGANIZATION CHART

Within the company the various competences are divided in different roles. The organigram in a functional role guarantees an ordered and clear partition of the duties, making unequivocal responsibility and autonomy at every level. The society today counts, thirty employees, which to the basis of various work commissions, we add specialized and not specialized workers. In the past the company has dealt with more than three hundred employees on the construction sites.



FINANCIAL RELIABILITY

The company is reputed to be a financially solid society. The insurance institutions have released to the I.C.S. IMPIANTI an A rating. Capitol solidity increasing through the years.



RESPECT FOR THE ENVIRONMENT

The I.C.S. IMPIANTI works, guaranteeing a reduction of the impact of its own activities in the surrounding environment. The company commits to continuously improve and prevent pollution, managing in a controlled way the activities that produce water discharges and emissions in the atmosphere; Manages the refuse directly or indirectly produced; considers all that concerns the environment equal to all the other managing aspects and works on improving the quality of life coherently with the concept of a sustainable development, with all due respect to collectivity and integrating the social, environmental, and economic politics.

**THE MULTI-YEAR
COMMITMENT
IN PLANT ENGINEERING**

MEP SERVICES

FOR MORE THAN TWENTY YEARS THE I.C.S. IMPIANTI REALIZES MEP SERVICES BOTH IN CIVIL AND INDUSTRIAL FIELDS.

The company cares for the installation and plant overhauls, of constructions of means of transport such as trains and ships, as well as the maintenance of petrochemical plants, steel products, power plants, foundries, subways, schools, hospital facilities, etc.



ELECTRICAL INSTALLATIONS

Realization of electrical plants for industrial and commercial sectors, for environments in the presence of areas with danger of explosion, MT/BT electrical distribution panels, electric cabins of transformation.

ELECTRO-INSTRUMENTAL PLANT ENGINEERING

Installations of electro-instrumental plants (or ELE/SMI Plants) that enable the control and command at a distance of process plants, plants dedicated to the development renewable energy, plants reserved to solar power systems, maintenance services and structured network cabling, optic fiber and automation systems.



INDUSTRIAL MECHANICS

Realization and construction of metal carpentry, installation, prefabrication and piping assemblies with possible contribution of various methods of welding, of which TIG (Tungsten Inert Gas), manual arc welding, wire welding, oxyacetylene, electrical, aluminothermic and others. Realizations of technological systems of the dosage and treatment of water, civil and industrial conditioning, components for the application of industrial hydraulics, special treatment on steel and alloys destined to big plants, insulators thermal and acoustic insulation, as well as oil plants, steel mills, cement factories, pharmaceutical, naval.

- AIR CONDITIONING SYSTEMS
- HEAT EXCHANGERS
- METAL CARPENTRY LIGHT AND HEAVY
- REFRIGERATION SYSTEMS – CHILLER
- STATIONS AND THERMAL SUBSTATIONS
- VENTILATION PLANTS AN/AF
- FIRE PREVENTION PLANTS
- PIPING
- HYDRAULIC PLANTS
- TRANSPORT AND DISTRIBUTION OF FLUIDS
- INSULATION
- PRECISION MECHANICS
- SPECIAL AND ELECTRICAL WELDING
- PAINTING
- COOL FLUID TREATMENT
- HYDRAULIC PLANTS





SUSTAINABILITY

I.C.S. Impianti Srl accelerates the energy transition and aims towards a green, carbon neutral economy, designing solutions that can reduce energy consumption and respect the environment. All products and services are aimed at the construction of a low-carbon energy system, fully participating, thanks to new digital technologies, in the Energy and Climate 2030 (Pniec) development plan and in the decarbonization plan of our country, "Net Zero Carbon" to 2045.

OUR WORKS

▪ ELECTROSTUMENTAL SYSTEMS INSTALLATION AT ARGENT ENERGY BIODIESEL PLANT – AMSTERDAM (NETHERLANDS)

SPECIFICALLY:

- INFRASTRUCTURE: CABLE CONTAINMENT VIA CABLE TRAYS, CONDUIT SYSTEMS, AND SUPPORT STRUCTURES.
- CABLING: INSTALLATION AND TERMINATION OF LV ELECTRICAL CABLES AND INSTRUMENTATION WIRING.
- DISTRIBUTION: INSTALLATION OF ELECTRICAL PANELS, JUNCTION BOXES (JB), AND LIGHTING SYSTEMS.
- INSTRUMENTATION: FIELD DEVICE CONNECTION AND HEAT TRACING SYSTEM INSTALLATION.

▪ ELECTROSTUMENTAL SYSTEMS INSTALLATION AT COVESTRO CHEMICAL PLANT – ANTWERP (BELGIUM) WOOD / COVESTRO

SPECIFICALLY:

- CABLE CONTAINMENT: INSTALLATION OF CABLE TRAYS, CONDUIT PIPING, AND CABIN SETUP.
- CABLING: LAYING AND TERMINATION OF POWER AND SIGNAL CABLES.
- DISTRIBUTION: INSTALLATION OF ELECTRICAL/INSTRUMENTATION PANELS, JBS, AND LIGHTING SYSTEMS.
- INSTRUMENTATION: FIELD INSTRUMENT MOUNTING AND HEAT TRACING SYSTEM INSTALLATION.

▪ ELECTROSTUMENTAL SYSTEMS EXECUTION AT BAKER HUGHES PLANT – MASSA (ITALY)

SPECIFICALLY:

- INFRASTRUCTURE (CABLE CONTAINMENT): INSTALLATION OF CABLE TRAYS (HOT-DIP GALVANIZED/AISI 316 WITH COVERS) AND CONDUIT SYSTEMS (HOT-DIP GALVANIZED/AISI 316), COMPLETE WITH FITTINGS, PULL BOXES, AND SUPPORT STRUCTURES.
- CABLING AND CONNECTIONS: LAYING, FASTENING, AND TERMINATION OF CABLES (ELECTRICAL/INSTRUMENTATION) IN TRAYS/CONDUIT, EXECUTION OF EARTHING/GROUNDING CONNECTIONS.
- PANELS AND JB: ELECTRICAL CONNECTIONS INSIDE JUNCTION BOXES (JB), RIO PANELS, AND LCP PANELS, INCLUDING THE INSTALLATION OF CABLE GLANDS AND ROXTEC MODULES.
- INSTRUMENTATION AND FINISHINGS: INSTALLATION OF TUBING WITH FITTINGS AND VALVES, INSTALLATION AND FIXING OF IDENTIFICATION TAGS (ITEM, JB, CABLE MARKERS).
- TESTING: EXECUTION OF CABLE CONTINUITY AND INSULATION TESTS.

▪ UPGRADE OF SNAM GAS COMPRESSION PLANT – MALBORGHETTO (ITALY)

SPECIFICALLY:

- INFRASTRUCTURE: CONSTRUCTION OF MAIN BUILDING AND ELECTRICAL SUBSTATION (E-HOUSE).
- CABLING: LAYING AND TERMINATION OF ELECTRICAL AND INSTRUMENTATION CABLES.
- SYSTEMS: INSTALLATION OF PANELS, MOTOR POWER (FORZA MOTRICE), LIGHTING, PHOTOVOLTAIC SYSTEM, FIRE PREVENTION SYSTEM (ANTINCENDIO), AND CATHODIC PROTECTION.
- INSTRUMENTATION: FIELD INSTRUMENT INSTALLATION AND HEAT TRACING SYSTEMS.

▪ ELECTROSTUMENTAL SYSTEMS INSTALLATION AT OSTIGLIA THERMAL POWER PLANT (ITALY) FATA / EP PRODUZIONE

SPECIFICALLY:

- INFRASTRUCTURE: CABLE CONTAINMENT VIA CABLE TRAYS AND CONDUIT SYSTEMS WITH SUPPORT STRUCTURES.
- CABLING: INSTALLATION OF ELECTRICAL AND INSTRUMENTATION CABLES.
- DISTRIBUTION: PANEL INSTALLATION AND CONNECTION.
- INSTRUMENTATION: FIELD INSTRUMENT INSTALLATION, F&G (FIRE & GAS) SYSTEMS, AND HEAT TRACING.

▪ CONSTRUCTION OF NEW PUMPING STATION AT CORRIDONIA (ITALY) SOCIETÀ GASDOTTI ITALIA (S.G.I.)

SPECIFICALLY:

- INFRASTRUCTURE: CONSTRUCTION OF MAIN BUILDING AND ELECTRICAL SUBSTATION (E-HOUSE).
- CABLING: LAYING AND TERMINATION OF ELECTRICAL AND INSTRUMENTATION CABLES.
- SYSTEMS: INSTALLATION OF PANELS, MOTOR POWER (FORZA MOTRICE), LIGHTING, PHOTOVOLTAIC SYSTEM, FIRE PREVENTION SYSTEM (ANTINCENDIO), AND CATHODIC PROTECTION.
- INSTRUMENTATION: FIELD INSTRUMENT INSTALLATION AND HEAT TRACING SYSTEMS.

▪ INSTALLATION OF LV/MV ELECTRICAL AND INSTRUMENTATION CABLES AT NESTE OIL REFINERY – ROTTERDAM (NETHERLANDS)

WHO ALREADY CHOSEN US



**ARGENT ENERGY BIODIESEL
PLANT AMSTERDAM**



**NESTE OIL REFINERY
ROTTERDAM**



**COVESTRO CHEMICAL PLANT
ANTWERP**



**GAS COMPRESSION PLANT
SNAM MALBORGHETTO**



**THERMAL POWER PLANT
EP PRODUZIONE OSTIGLIA**

Stazione di spinta SGI
Corridonia (MC)



**PUMPING STATION S.G.I.
CORRIDONIA**



**BAKER HUGHES PLANT
MASSA**

OUR WORKS

- INTERVENTIONS IN THE VARIOUS PLANTS IN MASSA, FLORENCE AND VIBO WITH THE DRESSING OF SKIPPED GAS TURBINES, STEAM TURBINES, COMPRESSOR TURBINES AND GENERATORS (BAKER HUGHES)
- ELECTRO-INSTRUMENTAL ASSEMBLING AND TRACING ON SKID OIL/GAS AND ASSEMBLING OF A RECOVERY STEAM GENERATOR AND SCR SYSTEM FOR THE ABATEMENT OF THE C/O POLLUTANTS AND THE HERACCP80MW PLANTS OF IMOLA (MACCHI, DIV. SOFINTER)
- ASSEMBLING OF ELECTRO-INSTRUMENTAL STEEL PLANT OF RIVA FOR ALSTOM POWER
- ELECTRIC PLANTS AND REVISION OF SMOKE CABIN, RIVA STEEL PLANT
- ASSEMBLING ELECTRO-INSTRUMENTAL PLANT REFINERY SANNAZZARO DE' BURGONDI
- REALIZATION OF ELECTRO-INSTRUMENTAL PLANT FIS TERMOLI
- ELECTRO-INSTRUMENTAL REALIZATION FOR THE 3V GREEN EAGLE PLANT, MESTRE (VE)
- ASSEMBLING ELECTRO-INSTRUMENTAL PLANTS IN THE STEEL MILL TENARIS DALMINE
- REVAMPING ELECTRO-INSTRUMENTALS ON BOARD OF THE SAIPEM SHIP S12000 PORT ELIZABETH (SOUTH AFRICA)
- REVAMPING ELECTRO-INSTRUMENTALS ON THE SAIPEM S7000 PLATFORM AT THE PORT IN ROTTERDAM
- ORDINARY MAINTENANCE OF ELECTRICAL AND INSTRUMENTAL PLANTS OF HYDROCARBON STORAGE AT THE SPA TAMOIL REFINERY IN CREMONA (CR)
- ACTIVITIES OF TIGHTENING LEVERISM AND MT SWITCHBOARD INSULATORS AND AT SWITCHES AT A SERVICE PLANT FOR THE REFINING OF PETROLEUM AT THE API REFINERY AT FALCONARA MARITTIMA (AN)
- REALIZATION OF ELECTRICAL AND ILLUMINATION PLANTS AND FM FOR INDUSTRIAL SHEDS IN EX CASITALIA
- MAINTENANCE OF METALWORKING EQUIPMENT AND INTERNAL INDUSTRIAL PLANTS AT THE CEMENT FACTORY BUZZI UNICEM SPA IN AUGUSTA
- INTERVENTIONS ON OPENING AND PENETRATING AND CLOSING AGAIN, FOR THE PASSAGE OF NEW CABLES TO LAY OUT. COMPLETION OF THE ACTIVITIES OF INSTALLATION ON THE CABLE PASSAGE WAYS AND INSTALLING OF THE NEW SEALING MODULES (ROXTEC) ON BOARD OF THE M/V VICTORY IN NAVIGATION
- ACTIVITIES OF DUCT LAYING AND ELECTRICAL CABLES SERVING THE LINE OF PRODUCTION OF MILK ENZYMES FOR SANOFI SPA IN ORIGGIO (VA)

WHO HAS ALREADY CHOSEN US

Recently we have participated in different jobs on an international field of which: the realization of the Metro Rail Project Doha in Qatar, at the side of TCS JVS on behalf of the MHI (Mitsubishi Heavy Industries); Realization of electro-instrumental revamping for the refinery of Paramaribo in Suriname, carrying out works of low and medium voltage and electro-instrumental interventions with the IREM GROUP SpA.



**METRO RAIL PROJECT
DOHA QATAR**



**M-V CARNIVAL
VICTORY**



**SKID OIL & GAS
MACCHI DIV. SOFINTAR**



**3V GREEN EAGLE PLANT,
MESTRE (VE)**



**ENRICO MATTEI DI SANNAZZARO
DE' BURGONDI REFINERY**



**GNL ITALIA DI PANIGAGLIA
PLANT, LA SPEZIA**



**BUZZI UNICEM SPA
PLANT, AUGUSTA**



**STAATSOLIE MAATSCHAPPIJ
SURINAME N.V.**

WHY CHOOSE US

I.C.S. IMPIANTI has the quality, safety, environmental and business management for social responsibility certifications ISO 9001, ISO 45001 and ISO 14001. Furthermore, the company has VCA corporate certification which is a prerequisite for access to petrochemical plants in the Netherlands, Belgium, Germany, Austria and Norway. With the CVA certification the company guarantees its employees and customers compliance with all the conditions necessary to operate within the construction sites in absolute safety and in compliance with the provisions of the reference regulations. In fact, the business model combines regulatory obligations, constant support and training of employees and overall work organization.



ENVIRONMENTAL
MANAGEMENT SYSTEM
CERTIFICATE



QUALITY SYSTEM
CERTIFICATE



SAFETY MANAGEMENT
SYSTEM CERTIFICATE



SOCIAL
ACCOUNTABILITY
CERTIFICATE



SYSTEM OF
SAFETY PREVENTION
VCA CERTIFICATION

AWARDS

The I.C.S. Impianti has been awarded several times for its commitment in favor of “safety at work”, for the care of the places where works and takes place through the application of the most advanced risk analysis and prevention technologies; for the accurate and responsible management of the work by individual technicians. For years, the company has been working in training workers of all levels with a program that aims to introduce tools and values designed to act and provide motivation to become a leader in safety.

The company strategy consists in building a real culture of health and prevention to concretely honor the professionalism of the Company's employees and collaborators.

The principles of safety are universal values and all the awards and prizes acquired testify the company's constant dedication to improving working conditions of its employees.

I.C.S. Impianti will continue to carry out its commitment on safety because “working in safety rewards!”

ELECTRO-INSTRUMENTAL PLANT

EDISON

ANSALDO
ENERGIA

GEKO
Energia & Ambiente

An exclusive recognition was given to our employee by the Geko Spa Company at the Presenzano Thermoelectric Plant, for having carried out electro-instrumental assembly work in full compliance with workplace safety regulations.



Baker
Hughes

“Hand accidents” prevention campaign at the Baker Hughes shipyard in Carrara. I.C.S. Impianti is awarded for having guaranteed compliance with all the necessary conditions for its employees and for having operated in total safety.





CONTACTS

LEGAL HEADQUARTER

Via Venezia 372, 93012 Gela (CL)

OPERATIONAL HEADQUARTERS

Via Copernico 38, 20125 Milano (MI)

OPERATIONAL WORKSHOP

C.da Pricopo, 93012 Gela (CL)

PHONE NUMBER

+39 0933 91 6019

E-MAIL

info@icsimpiantisrl.com

amministrazione@icsimpiantisrl.com

abroad@icsimpiantisrl.com

www.icsimpiantisrl.com

